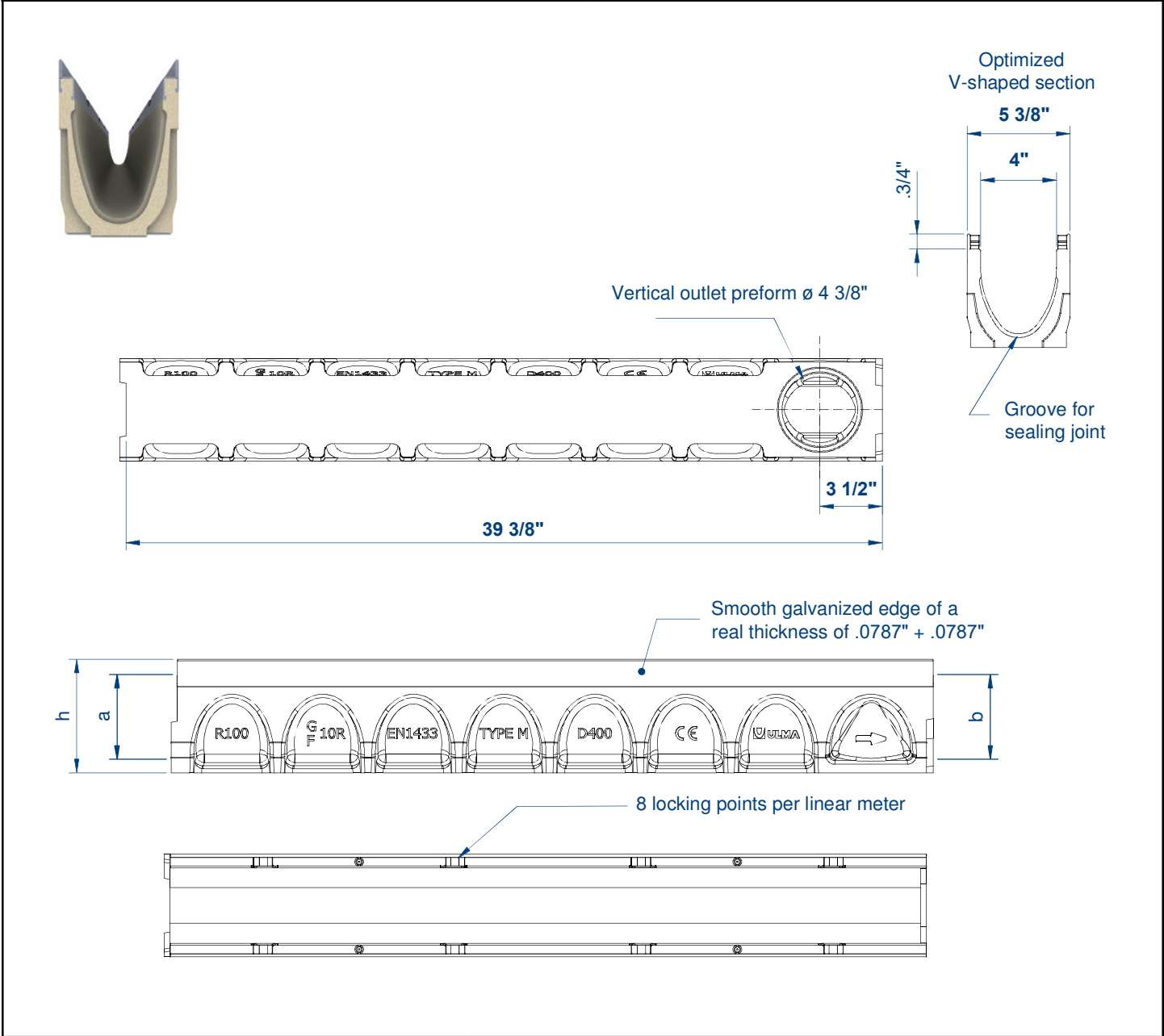



<p><b>Number</b></p> <p><b>R100Gxx Channel</b></p>	<p><b>Series</b></p> <p><b>ULG100</b></p> <p>Trench Drain Channel</p> <p>MultiV100 - Galvanized Edge</p>
--	--



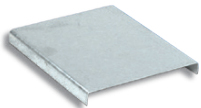
<p><b>Manufacturer</b></p> 	<p><b>Specification</b></p> <p>ULMA Linear Drainage Channel, type MULTIV+ R100G; Ext width 5 3/8" mm, Internal width 4" with overall heights between 4" and 11"; suitable for cascade-type slopes to collect rainwater; sections 39 3/8" length; optimized V-shape with self-cleaning effect; galvanized steel edges for lateral protection; Rapidlock® boltless system.</p>
--	--

DISCLAIMER - The customer and the customer's architects, engineers, consultants, and other professionals are completely responsible for the selection installation and maintenance of any product purchased from Trench Drain Supply and/or its manufacturers. TRENCH DRAIN SUPPLY MAKES NO WARRANTY, EXPRESS OR IMPLIED, AS TO THE SUITABILITY, DESIGN, MERCHANTABILITY, OR FITNESS OF THE PRODUCT FOR CUSTOMERS APPLICATION. The drawing and information provided remain the property and copyright of the manufacturer listed. The manufacturer reserves the right to modify specification without notice.

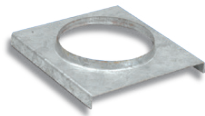
<b>Number</b> <b>R100Gxx Dimensions</b>	<b>Series</b> <b>ULG100</b> Trench Drain Specs MultiV100
--	---



Closed



Open



FAST, BOLTLESS SAFETY  
LOCKING 8 fastening points  
per linear meter.

**rapidlock**<sup>®</sup>

**Manufacturer**



**MULTIV+100**

Channel reference:	Total height		Internal height		Hydraulic section (in <sup>2</sup> )	Ø outlet(mm)	
	h (in)	H (in)	a (in)	b (in)		Vert.	Horiz.
R100G00R	3.94	3.94	2.44	2.44	08.68	110	-
R100G01	3.94	4.13	2.44	2.63	09.44	110	-
R100G02	4.13	4.33	2.63	2.83	09.97	110	-
R100G03	4.33	4.53	2.83	3.03	10.49	110	-
R100G04	4.53	4.72	3.03	3.23	11.02	110	-
R100G05	4.72	4.92	3.23	3.43	11.55	110	-
R100G06	4.92	5.12	3.43	3.62	12.07	110	-
R100G07	5.12	5.31	3.62	3.82	12.60	110	-
R100G08	5.31	5.51	3.82	4.02	13.13	110	-
R100G09	5.51	5.71	4.02	4.21	13.66	110	-
R100G10	5.71	5.91	4.21	4.41	14.18	110	-
R100G10R	5.91	5.91	4.41	4.41	14.18	110	-
R100G11	5.91	6.10	4.41	4.61	14.96	110	-
R100G12	6.10	6.30	4.61	4.80	15.59	110	-
R100G13	6.30	6.49	4.80	5.00	16.21	110	-
R100G14	6.49	6.69	5.00	5.20	16.85	110	-
R100G15	6.69	6.89	5.20	5.39	17.47	110	-
R100G16	6.89	7.09	5.39	5.59	18.11	110	-
R100G17	7.09	7.28	5.59	5.79	18.72	110	-
R100G18	7.28	7.48	5.79	5.98	19.69	110	-
R100G19	7.48	7.68	5.98	6.18	19.98	110	-
R100G20	7.68	7.87	6.18	6.38	20.62	110	-
R100G20R	7.87	7.87	6.38	6.38	20.62	110	-
R100G21	7.87	8.07	6.38	6.58	21.28	110	-
R100G22	8.07	8.27	6.58	6.77	21.95	110	-
R100G23	8.27	8.46	6.77	6.97	22.61	110	-
R100G24	8.46	8.66	6.97	7.16	23.28	110	-
R100G25	8.66	8.86	7.16	7.37	23.95	110	-
R100G26	8.86	9.06	7.37	7.56	24.61	110	-
R100G27	9.06	9.25	7.56	7.76	25.28	110	-
R100G28	9.25	9.45	7.76	7.95	25.95	110	-
R100G29	9.45	9.65	7.95	8.15	26.61	110	-
R100G30	9.65	9.84	8.15	8.35	27.78	110	-
R100G30R	9.84	9.84	8.35	8.35	27.78	110	-
R100G40R	11.81	11.81	10.31	10.31	34.10	110	-

DISCLAIMER - The customer and the customer's architects, engineers, consultants, and other professionals are completely responsible for the selection installation and maintenance of any product purchased from Trench Drain Supply and/or its manufacturers. TRENCH DRAIN SUPPLY MAKES NO WARRANTY, EXPRESS OR IMPLIED, AS TO THE SUITABILITY, DESIGN, MERCHANTABILITY, OR FITNESS OF THE PRODUCT FOR CUSTOMERS APPLICATION. The drawing and information provided remain the property and copyright of the manufacturer listed. The manufacturer reserves the right to modify specification without notice.